



tecumseh

50 Hz
60 Hz

COMPRESSOR LINE-UP

2 ⇨ 145 CC



T C • T H • A E • A L • A J • A W • A G



built to last
robust reciprocating
compressors for light commercial
and commercial refrigeration



wide capacity range
complete portfolio
from 2 to 145 cm³
to fit every application



eco-friendly
available for eco-friendly
refrigerant R290,
compatibility with A2L & A1

REFRIGERANTS



APPLICATIONS

beverage cooler
ice cream freezer
chest freezer
display case
supermarket island
multi-door merchandiser
cold room

TECHNOLOGIES





COOLING PERFORMANCE

230V 1PH 50/60Hz

R-290 - LOW BACK PRESSURE (LBP)

model	disp. (cc)	current (amp) 50Hz 60Hz	LRA (amp)	ASHRAE Evap -23.3°C / Cond 54.4°C Liq 32°C / RG 32°C			circuit	over load protector	start relay	start capacitor		run capacitor		oil qty (cc)	net weight (kg)
				cap. (BTU/h)	power (W)	EER (BTU/Wh)				item code	Mfd, VAC	item code	Mfd, VAC		
				50Hz 60Hz	50Hz 60Hz	50Hz 60Hz		item code	item code	item code	Mfd, VAC				
TCW330U-MR3A	183	0.3 0.3	8.8	225 290	60 69	3.8 4.2	PTCSCR	830-10687	820-10418	-	-	85R-10079	3,440	170	7.5
TCW350U-MR3B	2.72	0.4 0.5	9.1	405 480	83 96	4.9 5	PTCSCR	830-10692	820-10418	-	-	85R-10037	5,440	170	7.5
TCW380U-MR3B	4.19	0.7 0.7	10.9	712 850	138 158	5.2 5.4	PTCSCR	830-10616	820-10418	-	-	85R-10080	4,440	170	7.6
TCW390U-MR3B	4.75	0.7 0.7	10.9	737 835	151 163	4.9 5.1	PTCSCR	830-10616	820-10418	-	-	85R-10080	4,440	170	7.6
TCW410U-MR3B	6.06	1.3 1.1	17.3	983 1180	201 220	4.9 5.4	PTCSCR	830-10689	820-10418	-	-	85R-10080	4,440	170	7.8
TCW413U-MR3B	6.93	1.1 1.2	17	1165 1350	226 245	5.2 5.5	PTCSCR	830-10689	820-10418	-	-	85R-10091	7.5,440	170	7.8
TCW415U-MR3B	7.84	1.4 1.4	18.4	1356 1560	277 296	4.9 5.2	PTCSCR	830-10681	820-10418	-	-	85R-10038	10,440	215	8
TCW417U-MR3B	8.87	1.6 1.43	14	1485 1700	309 325	4.8 5.2	CSR	830-10684	820-10492	INI96	40-60,330	85R-10038	10,440	215	8
TCW420U-UZ3B	10.70	1.9 1.9	16.5	1850 2090	375 400	4.9 5.2	CSR	830-10694	820-10490	85S-10071	72-88,330	85R-10038	10,440	215	8.2
TC2424U-FZ3B	12.47	2.1 -	16.5	2000 -	435 -	4.6 -	CSR	830-10694	820-10490	85S-10071	72-88,330	85R-10038	10,440	215	8.2

R-290 - MEDIUM BACK PRESSURE (MBP)

model	disp. (cc)	current (amp) 50Hz 60Hz	LRA (amp)	ASHRAE Evap -6.7°C / Cond. 54.4°C Liq 46.1°C / RG 35°C			circuit	over load protector	start relay	start capacitor		run capacitor		oil qty (cc)	net weight (kg)
				cap. (BTU/h)	power (W)	EER (BTU/Wh)				item code	Mfd, VAC	item code	Mfd, VAC		
				50Hz 60Hz	50Hz 60Hz	50Hz 60Hz		item code	item code	item code	Mfd, VAC				
TCW330U-MR3A	183	0.4 0.4	8.8	485 590	80 92	6.1 6.4	PTCSCR	830-10687	820-10418	-	-	85R-10079	3,440	170	7.5
TCW350U-MR3B	2.72	0.5 0.6	9.1	765 920	107 127	7.1 7.2	PTCSCR	830-10692	820-10418	-	-	85R-10037	5,440	170	7.5
TCW380U-MR3B	4.19	0.8 0.9	10.9	1285 1560	177 214	7.3 7.3	PTCSCR	830-10616	820-10418	-	-	85R-10080	4,440	170	7.6
TCW390U-MR3B	4.75	0.9 1	10.9	1387 1610	194 235	7.2 6.9	PTCSCR	830-10616	820-10418	-	-	85R-10080	4,440	170	7.6
TCW410U-MR3B	6.06	1.4 1.5	17.3	1780 2160	261 310	6.8 7	PTCSCR	830-10689	820-10418	-	-	85R-10080	4,440	170	7.8
TCW413U-MR3B	6.93	1.4 1.5	17	2064 2440	295 340	7 7.2	PTCSCR	830-10689	820-10418	-	-	85R-10091	7.5,440	170	7.8
TCW415U-MR3B	7.84	1.7 1.8	18.4	2342 2780	355 400	6.6 7	PTCSCR	830-10681	820-10418	-	-	85R-10038	10,440	215	8
TCW417U-MR3B	8.87	1.9 1.9	14	2630 3000	400 440	6.6 6.8	CSR	830-10684	820-10492	INI96	40-60,330	85R-10038	10,440	215	8
TCW420U-UZ3B	10.70	2.3 2.4	16.5	3170 3540	495 550	6.4 6.4	CSR	830-10694	820-10490	85S-10071	72-88,330	85R-10038	10,440	215	8

TCW, AEX compressors are approved for L/MBP Application (deep freezers (LBP), viscoolers and display cases (MBP) applications. While using TCW with PTCSCR circuit, it's advised to optimize the refrigeration system for a minimum 3 minute time gap between the on / off cycles and suction and discharge pressures at equal conditions. Please note that as per IEC standard the maximum charge quantity in the R290 applications is 150 gm per refrigeration circuit. Please use the original electrical accessories for all the compressors for replacements or servicing.



COOLING PERFORMANCE

230V 1PH 50Hz

R-290 - HIGH BACK PRESSURE (HBP)

model	disp. (cc)	current (amp) 50Hz	LRA (amp)	ASHRAE Evap 7.2°C / Cond. 54.4°C Liq 46.1°C / RG 35°C			circuit	over load protector	start relay	start capacitor		run capacitor		oil qty (cc)	net weight (kg)
				cap. (BTU/h) 50Hz	power (W) 50Hz	EER (BTU/Wh) 50Hz				item code	Mfd, VAC	item code	Mfd, VAC		
TC3415U-GE3B	2.72	0.6	9.1	1250	132	9.5	PTCSCR	830-10692	820-10418	-	-	85R-10037	5, 440	170	7.5
TC3425U-GE3B	4.75	1	12.7	2220	225	9.9	PTCSCR	830-10616	820-10418	-	-	85R-10091	7.5, 440	170	7.6
TC4430U-GE3B	6.06	1.4	10.6	2790	300	9.3	CSR	830-10684	820-10494	INI96	40-60, 330	85R-10044	6, 440	170	7.8
TC4440U-GE3B	7.84	2	14.8	3720	420	9	CSR	830-10684	820-10491	INI96	40-60, 330	85R-10038	10, 440	215	8.3
AE4460U-FZIC	12.01	3.7	17.5	5850	634	9.4	CSIR	-	-	-	65, 330	-	-	360	11.3

Gas charges should not exceed 150 grams per single refrigeration circuit.
Please note that as per IEC standard the maximum charge quantity in the R-290 applications is 150 gm per single refrigeration circuit.



robustness
& flexibility
for commercial
refrigeration.



COOLING PERFORMANCE

230V 1PH 50Hz

R-134A - LOW BACK PRESSURE (LBP)

model	disp. (cc)	current (amp)	LRA (amp)	ASHRAE Evap -23.3°C / Cond 54.4°C Liq 32°C / RG 32°C			circuit	over load protector		start relay		start cap. (Mfd, VAC)	run cap. (Mfd, VAC)	oil qty (cc)	net weight (kg)
				capacity (BTU/h)	power (w)	EER (BTU/Wh)		model number	item code	model number	item code				
THK1330YCF	3.14	0.7	7.5	280	80	3.5	PTCSIR	4TM189NFBYY53	MCM-PI89NFBYY53	8EA17CI-02	820-10297	-	-	210	7
THK1340YCF	4	0.8	8.1	365	113	3.2	PTCSIR	DRB168N6IA2	830-10704	8EA17CI-02/QP2-22	820-10297/820-10417	-	-	210	7
THK1351YJF	5.01	0.9	10	445	120	3.7	PTCSCR	DRB243P6IA2	830-10610	QP2-15	820-10418	-	5,440	230	7.3
THK1365YJE	5.90	0.7	12	540	128	4.2	PTCSCR	DRB21N6IA2	830-10587	QP2-15	820-10418	-	5,440	230	8
THK1374YFS	6.9	1	11	600	143	4.2	CSR	B78-110	830-10601	820-10167		88-108, 220	6,440	230	9
THK1374YFS	6.9	1.2	11	600	143	4.2	PTCSCR	DRB243P6IA2	830-10610	QP2-15	820-10418	-	5,440	230	8.7
TCI390Y-JF3B	7.84	0.75	17.2	750	160	4.7	PTCSCR	DRB244R6IA2	830-10693	QP2-15	820-10418	-	10,440	215	8
THK2390YJE (FOW)	8.2	0.85	10	770	160	4.8	CSR	MRA-12420-9011	830-10156	820-10167		88-108, 220	6,440	270	8.6
THK2390YJE	8.2	0.8	6	770	168	4.6	CSR	B68-110	830-10604	820-10167		88-108, 330	8,440	270	8.4
THK2411YGH (FOW)	9.33	1.6	12	905	210	4.3	CSIR	MSP59AM105/61	MRA-12413-9011	-	820-10183	88-108, 250	-	270	8.9
THK2411YGH	9.33	1.3	12	905	210	4.3	CSR	B88-105	830-10589	820-10166	-	88-108, 250	6,440	270	8.5
AE2415YGH	12.48	1.8	14.5	1170	270	4.3	CSR	MRA-12465-9011	830-10300	-	820-10167	72-88, 230	7.5, 440	380	11.2

R-134A - COMMERCIAL BACK PRESSURE (CBP)

model	disp. (cc)	current (amp)	LRA (amp)	ASHRAE Evap -6.7°C / Cond 54.4°C Liq 46°C / RG 35°C			circuit	over load protector		start relay		start cap. (Mfd, VAC)	run cap. (Mfd, VAC)	oil qty (cc)	net weight (kg)
				capacity (BTU/h)	power (w)	EER (BTU/Wh)		model number	item code	model number	item code				
THK0384YCG	4	1.2	6.5	755	148	5.10	PTCSIR	5TM222RFBYY53	MCMPT5-M222RF53	8EA17CI-02	820-10297	-	-	270	7
THK9384YCG	4	1.2	6.7	755	148	5.10	CSIR	MRA-12433-9011	830-10195	9660D-3018-111	820-10116	40-60, 330	-	270	7
THK0410YGE	5.01	1.4	9.5	940	180	5.22	PTCSIR	4TM-739MFBYY53	830-10580	8EA17CI-02	820-10297	-	-	270	8
THK9410YGE	5.01	1.4	9.5	940	180	5.22	CSIR	MRA-12501-9011	830-10581	9660D-3018-118	9660-3018-118	40-60, 330	-	270	8
THK9412YJE	5.60	0.9	9	1080	170	6.35	CSR	B78-110	830-10601	820-10454		40-60, 330	5,440	270	8
THK9414YJE	6.58	1.1	10	1250	215	5.81	CSR	B78-110	830-10601	820-10453		40-60, 330	8,440	270	8.5
THK9417YJE	8.21	1.2	11	1600	280	5.71	CSR	B88-105	830-10589	820-10167		40-60, 330	12,440	270	8.5



COOLING PERFORMANCE

230V 1PH 50Hz

R-134A - HIGH MEDIUM BACK PRESSURE (HMBP)

model	disp. (cc)	current (amp)	LRA (amp)	ASHRAE Evap 7.2°C / Cond 54.4°C Liq 46°C / RG 35°C			circuit	over load protector		start relay		start cap. (Mfd, VAC)	run cap. (Mfd, VAC)	oil qty (cc)	net weight (kg)
				capacity (BTU/h)	power (W)	EER (BTU/Wh)		model number	item code	model number	item code				
THK4420YGE	5.01	1.6	9.5	1725	212	8.13	CSIR	MRA-12501-9011	830-10581	9660D-3018-118	9660D-3018-118	40-60, 330	-	270	9
THK4428YFS	6.90	1.9	11	2370	315	7.52	CSR	B88-115	830-10590	820-10167		40-60, 330	8, 440	270	9
AE4440YGH	10.33	2.2	13	3650	450	8.11	CSR	MRA-12467-9011	830-10299	820-10166		40-60,330	10, 440	280	10
AE4460YGH	15.09	3	18.5	5400	635	8.50	CSR	B140-115	830-10606	820-10338		72-88, 330	12, 440	380	11.2
AL4461Y-FZIA	17.71	4.2	23	6046	679	8.90	CSIR	830-10147		MTRPH5031	820-10395	108-130, 330	-	326	13.1
AL4480Y-FZ3A	19.95	3.5	18.5	6700	755	8.87	CSR	830-10712		RVA3M3D	820-10437	53-64, 330	20, 440	326	13.2
AWS4515YGE	39.60	5.4	40	12500	1200	10.4	CSR	Internal		RVA4L3D	820-10451	88-108, 330	25, 440	1050	26
AWS4518YXC	48.50	6.8	40	15500	1490	10.4	CSR	Internal		RVA3AM3D 820-10487		88-108, 330	30, 440	1140	27
AWS4525YXC	63	10	52	21180	2040	10.4	CSR	Internal		RVA4G3D	820-10178	88-108, 330	35, 440	1140	26.5

220V 1PH 50/60Hz

R-134A - HIGH MEDIUM BACK PRESSURE (HMBP)

model	disp. (cc)	current (amp)	LRA (amp)	ASHRAE Evap 7.2°C / Cond 54.4°C Liq 46°C / RG 35°C			circuit	over load protector		start relay		start cap. (Mfd, VAC)	run cap. (Mfd, VAC)	oil qty (cc)	net weight (kg)
				capacity (BTU/h)	power (W)	EER (BTU/Wh)		model number	item code	model number	item code				
THK4430YGS	8.21	1.8	12	2850	347	8.21	CSR	B88-115	830-10590	820-10167		40-60, 330	10, 440	270	9
THK4430YGS*	8.21	2	12	3300	400	8.25	CSR	B88-115	830-10590	820-10167		40-60, 330	10, 440	270	9

380V 3PH 50Hz / 460V 3PH 60Hz

R-134A - HIGH MEDIUM BACK PRESSURE (HMBP)

model	disp. (cc)	current (amp)	LRA (amp)	ASHRAE Evap 7.2°C / Cond 54.4°C Liq 46°C / RG 35°C			circuit	over load protector	suggested contactor size (amp)	internal OLR range (amp)	oil qty (cc)	net weight (kg)
				capacity (BTU/h)	power (W)	EER (BTU/Wh)						
AWS4515YLZ	48.5	2.1	15.2	12000	1100	10.9	3 phase	Internal	10	4-7	1140	27
AWS4515YLZ*	48.5	2.4	15.2	14100	1340	10.5					1140	27
AWS4518YXG	48.5	2.5	23	15000	1450	10.3					1140	27
AWS4518YXG*	48.5	2.5	23	18300	1750	10.46					1140	26.5
AWS4525YXG	63	3.38	26	20460	1965	10.42					1140	26.5
AWS4525YXG*	63	3.43	26	24725	2400	10.31					1140	26.5
AWS4527YXG	68	3.5	26	23200	2255	10.29					1140	26.5
AWS4527YXG*	68	3.6	26	29200	2700	10.81					1140	26.5

*Performance calculated at 60Hz.



COOLING PERFORMANCE

230V 1PH 50Hz

R-404A - LOW BACK PRESSURE (LBP)

model	disp. (cc)	current (amp)	LRA (amp)	ASHRAE Evap -23.3°C / Cond 54.4°C Liq 32°C / RG 32°C			circuit	overload protector	start relay		start cap. (Mfd, VAC)	run cap. (Mfd, VAC)	oil qty (cc)	net weight (kg)
				capacity (BTU/h)	power (W)	EER (BTU/Wh)			model number	item code				
AE2415Z-FZIB	7.33	2	12.5	1300	305	4.2	CSIR	T411I-23-ZP	RP403B-ZR (9660D-3018-130)		72-88, 330	-	265	11
AE2425Z-FZ3C	12.01	2.2	18.5	2250	456	4.9	CSR	830-10432	RVA4Q3D		88-108, 250	10, 440	366.3	11
AE2430Z-FZ3C	14.51	3.5	21.5	2700	587	4.6	CSR	MSP36AMW	RVA6O3C		88-108, 330	10, 400	366.3	12
ALX445Z-FZ3A	19.95	3.4	20.5	3700	705	5.2	NTC-CSR	830-10675	QL2 11.5 D	820-10441	72-88, 330	25, 400	326	14
CAJ2464Z-FZ3C	34.45	6.1	40	5387	1217	4.4	CSR	MST16AFZ	RVA6M		88, 330	20, 400	475	22.2
AWS2470ZGE	43.26	7.9	55	5800	1300	4.5	CSR	Internal	KCC3-3E3C		150-200, 230	45, 440	1140	28
AWS2495ZGE	54.3	9	65	8400	1700	4.9	CSR	Internal	KCC3-4AL3C		150-200, 230	45, 450	1140	28
AWV2495ZGE(M)	54.3	9	65	8400	1700	4.9	CSR	Internal	AWS2495-020B10		150-200, 230	45, 450	1140	28
AWS2512ZXC	68	11	71	12000	2330	5.2	CSR	Internal	KCC3-3AH3C		161-193, 330	60, 440	1140	31
AWV2512ZXC(M)	68	11	71	12000	2330	5.2	CSR	Internal	AWS2512-020B10		161-193, 330	60, 440	1140	31

*(M) - FOW.

220V 1PH 50/60Hz

R-404A - LOW BACK PRESSURE (LBP)

model	disp. (cc)	current (amp)	LRA (amp)	ASHRAE Evap -23.3°C / Cond 54.4°C Liq 32°C / RG 32°C			circuit	overload protector	start relay	start cap. (Mfd, VAC)	run cap. (Mfd, VAC)	oil qty (cc)	net weight (kg)
				capacity (BTU/h)	power (W)	EER (BTU/Wh)							
AE2420Z-GSIB	9.33	2.9	19	1700	390	4.4	CSIR	830-10672	820-10225	88-108, 250	-	360	10.6
AE2420Z-GSIB*	9.33	2.6	19	2050	442	4.6	CSIR	830-10672	820-10225	88-108, 250	-	360	10.6

220V 1PH 50Hz

R-404A - MEDIUM BACK PRESSURE (MBP)

model	disp. (cc)	current (amp)	LRA (amp)	ASHRAE Evap -6.7°C / Cond 54.4°C Liq 46.1°C / RG 35°C			circuit	overload protector	start relay		start cap. (Mfd, VAC)	run cap. (Mfd, VAC)	oil qty (cc)	net weight (kg)
				capacity (BTU/h)	power (W)	EER (BTU/Wh)			model number	item code				
ALX445Z-FZ3A	19.95	5	20.5	8600	1047	8.3	NTC-CSR	830-10675	QL2 11.5 D	820-10441	72-88, 330	25, 400	326	14

R-404A - HIGH MEDIUM BACK PRESSURE (HMBP)

model	disp. (cc)	current (amp)	LRA (amp)	ASHRAE Evap 7.2°C / Cond 54.4°C Liq 46°C / RG 35°C			circuit	overload protector	start relay		start cap. (Mfd, VAC)	run cap. (Mfd, VAC)	oil qty (cc)	net weight (kg)
				capacity (BTU/h)	power (W)	EER (BTU/Wh)			model number	item code				
AE4440Z-FZ1A	6.69	2.7	16	3600	462	7.8	CSIR	T141I-23	RP4518	900-12564	108-130, 330	-	266	10
AE4460Z-FZ1C	10.33	4.3	19	5650	740	7.6	CSIR	T88494-23-ZP	RP5318	900-12564	64-77, 330	-	366	12
AE4470Z-FZ3C	12.01	3.9	18.2	6600	845	7.8	CSR	MSP28APW	RVA6M3C		88-108, 330	20, 400	366	11
AL4510Z-FZ3A	17.71	5.1	20	9290	1097	8.5	CSR	830-10274	QL2 13.0 D	820-10456	53-64MFD, 330VAC	30, 400	326	19

*Performance calculated at 60Hz.



COOLING PERFORMANCE

220V 1PH 50/60Hz

R-404A - HIGH MEDIUM BACK PRESSURE (HMBP)

model	disp. (cc)	current (amp)	LRA (amp)	ASHRAE Evap 7.2°C / Cond 54.4°C Liq 46°C / RG 35°C			circuit	overload protector	start relay	start cap. (Mfd, VAC)	run cap. (Mfd, VAC)	oil qty (cc)	net weight (kg)
				capacity (BTU/h)	power (w)	EER (BTU/Wh)							
AWS4516ZXN	30.56	6.8	45	14000	1490	9.4	CSR	Internal	RVA4G3D	88-108, 330	35,440	1140	26
AWS4522ZXN	39.6	11.5	60	20200	2120	9.5			RVA2AEKD	97, 330	35,440	1140	26
AWS4532ZXN	50.6	17.6	85	27000	2900	9.3			RVA3AH3D	160, 330	45,440	1140	29
AWS4538ZXN	63	20.2	126	34600	3620	9.6			RVA4AM3D	161-193, 330	45,440	1140	30
AWS4516ZXN*	30.56	7.9	45	16800	1830	9.2			RVA4G3D	88-108, 330	35,440	1140	26
AWS4522ZXN*	39.6	10.5	60	23600	2450	9.6			RVA2AEKD	97, 330	35,440	1140	26
AWS4532ZXN*	50.6	14.8	85	32000	3300	9.7			RVA3AH3D	160, 330	45,440	1140	29
AWS4538ZXN*	63	18.8	126	40700	4260	9.6			RVA4AM3D	161-193, 330	45,440	1140	30

400V 3PH 50/60Hz

R-404A - LOW BACK PRESSURE (LBP)

model	disp. (cc)	current (amp)	LRA (amp)	ASHRAE Evap -23.3°C / Cond 54.4°C Liq 32°C / RG 32°C			circuit	over load protector	suggested contactor size (amp)	internal OLR range (amp)	oil qty (cc)	net weight (kg)
				capacity (BTU/h)	power (w)	EER (BTU/Wh)						
AWS2470ZLZ	43.3	2.3	21	5800	1235	4.7	3 phase	internal	12	6 - 10	1140	28
AWS2495ZXG	54.3	3.1	31	8350	1620	5.2			12	6 - 10	1140	28
AWS2512TZ	68.03	4.2	60	11500	2270	5.1			18	8 - 12	1140	30
TAG2516Z-TZ	112.5	4.6	45	14857	2871	5.2			18	8-12	1960	45
TAG2522Z-TZ	134.8	6.5	56	18270	3624	5			25	12 - 18	1960	47
TAG2525Z-TZ	145	7	56	20454	4078	5			25	12 - 18	1960	46
AWS2470ZLZ*	43.3	3.4	21	6500	1380	4.7			12	6 - 10	1140	28
AWS2495ZXG*	54.3	2.7	31	8977	1750	5.1			12	6 - 10	1140	28
AWS2512TZ*	68.03	3.6	60	13031	2474	5.3			18	8 - 12	1140	30
TAG2516Z-TZ*	112.5	4.7	45	17178	3175	5.4			18	8 - 12	1960	45
TAG2522Z-TZ*	134.8	7.2	56	23432	4687	5			25	12 - 18	1960	47
TAG2525Z-TZ*	145	7.6	56	25561	5127	5			25	12 - 18	1960	46

*Performance calculated at 60Hz.



COOLING PERFORMANCE

400V 3PH 50/60Hz

R-404A - HIGH MEDIUM BACK PRESSURE (HMBP)

model	disp. (cc)	current (amp)	LRA (amp)	ASHRAE Evap 7.2°C / Cond 54.4°C Liq 46°C / RG 35°C			circuit	over load protector	suggested contactor size (amp)	internal OLR range (amp)	oil qty (cc)	net weight (kg)
				capacity (BTU/h)	power (W)	EER (BTU/Wh)						
AWS4516ZXG	30.56	2.5	20	13500	1440	9.4	3 phase	internal	10	4 - 7	1140	27
AWS4522ZXG	39.6	3.2	20	19400	2000	9.7			10	4 - 7	1140	26
AWS4532ZXG	50.6	4.1	30	25600	2640	9.7			12	4 - 7	1140	28
AWS4538ZXG	63	6.1	45	33500	3450	9.7			16	6 - 10	1140	30
AWS4544ZXG	68	6.7	42	37000	4060	9.1			16	6 - 10	1140	30
TAG4573Z-TZ	134.8	11.6	56	63806	7143	8.1			25	12 - 18	1960	48
TAG4581Z-TZ	145	12.7	83	68963	7942	7.9			25	12 - 18	1960	48
AWS4516ZXG*	30.56	2.5	20	16200	1730	9.4			10	4 - 7	1140	27
AWS4522ZXG*	39.6	3.3	20	23400	2430	9.6			10	4 - 7	1140	26
AWS4532ZXG*	50.6	4.5	30	31400	3220	9.8			12	4 - 7	1140	28
AWS4538ZXG*	63	6.3	45	40150	4200	9.6			16	6 - 10	1140	30
AWS4544ZXG*	68	6.6	42	44500	4850	9.2			16	6 - 10	1140	30
TAG4573Z-TZ*	134.8	13.8	56	69713	9203	7.6			25	12 - 18	1960	48
TAG4581Z-TZ*	145	14.1	83	73541	10044	7.3			25	12 - 18	1960	48

*Performance calculated at 60Hz.



COOLING PERFORMANCE

230V 1PH 50Hz

R-404A - HIGH MEDIUM BACK PRESSURE (HMBP)

model	disp. (cc)	current (amp)	LRA (amp)	ASHRAE Evap 7.2°C / Cond 54.4°C Liq 46°C / RG 35°C			circuit	over load protector	start relay	start cap. (Mfd, VAC)	run cap. (Mfd, VAC)	oil qty (cc)	net weight (kg)
				capacity (BTU/h)	power (W)	EER (BTU/Wh)							
AWR4514CGE	30.6	5.6	37	11900	1260	9.4	CSR	internal	RVA4G3D	88-108, 330	25, 440	1140	27
AWR4522CGH	43.26	10	48	19000	1900	10			KCC3-4I3D	88-108, 330	35, 440	1050	28
AWR4530CGH	49.5	11	68	24500	2380	10.3			KCC3-4G3D	80-100, 330	45, 440	1050	30
AWR4535CXC	63	14.1	85	29000	2980	9.7			RVA4G3D	145-175, 330	50, 440	1140	30.2

400V 3PH 50Hz

R-404A - HIGH MEDIUM BACK PRESSURE (HMBP)

model	disp. (cc)	current (amp)	LRA (amp)	ASHRAE Evap 7.2°C / Cond 54.4°C Liq 46°C / RG 35°C			circuit	over load protector	suggested contactor size (amp)	internal OLR range (amp)	oil qty (cc)	net weight (kg)
				capacity (BTU/h)	power (W)	EER (BTU/Wh)						
AWR4514CGF	30.6	2.2	18	11700	1270	9.2	3 phase	internal	10	4 - 6.5	1140	26.6
AWR4522CGF	43.26	3.4	22	19500	1980	9.9			10	4 - 6.5	1140	28.5
AWR4530CGF	54.3	4.3	30	26400	2575	10.3			12	4 - 6.5	1140	28.5
AWR4535CGF	63	5.2	45	28900	2940	9.8			12	6 - 10	1140	29.9
AWR4540CGF	68	5.9	45	33200	3460	9.6			16	6 - 10	1140	29.7



COOLING PERFORMANCE

230V 1PH 50Hz

R-22 / R-407C - HIGH BACK PRESSURE (HBP)

model	disp. (cc)	current (amp)	LRA (amp)	ASHRAE Evap 7.2°C / Cond 54.4°C Liq 46°C / RG 35°C			circuit	over load protector	start relay		start cap. (Mfd, VAC)	run cap. (Mfd, VAC)	oil qty (cc)	net weight (kg)
				capacity (BTU/h)	power (W)	EER (BTU/Wh)			model number	BOM Code				
AWQ5515WGE	32.7	6.3	40	13000	1400	9.3	CSR	internal	KCC3-4I3D	820-10477	72-88, 330	25, 440	1140	27
AWQ5522WGE	43.26	10	51	20700	2080	10			KCC3-4G3D	820-10478	88-108, 330	35, 440	1140	28
AWR5530WGH	50.6	11.7	79	25200	2560	9.8			KCC3-6N3D	820-10479	120-150, 330	45, 440	1140	29
AWR5532WGH	54.3	12.2	79	26800	2720	9.9			KCC3-6N3D	820-10479	120-150, 330	45, 440	1140	29
AWR5535WGH	59	14.2	92	31500	3200	9.8			KCC3-4G3D	820-10478	88-108, 330	45, 440	1140	30

230V 1PH 50/60Hz

R-22 / R-407C - HIGH BACK PRESSURE (HBP)

model	disp. (cc)	current (amp)	LRA (amp)	ASHRAE Evap 7.2°C / Cond 54.4°C Liq 46°C / RG 35°C			circuit	over load protector	start relay		start cap. (Mfd, VAC)	run cap. (Mfd, VAC)	oil qty (cc)	net weight (kg)
				capacity (BTU/h)	power (W)	EER (BTU/Wh)			model number	BOM Code				
AWZ5542WXN	68.02	20.5	100	35660	3850	9.3	CSR	internal	KCC3-3AH3D	820-10480	145-175, 330	45, 440	1140	30
AWZ5542WXN*	68.02	20.5	100	42800	4520	9.5			KCC3-3AH3D	820-10480	145-175, 330	45, 440	1140	30

400V 3PH 50Hz

R-22 / R-407C - HIGH BACK PRESSURE (HBP)

model	disp. (cc)	current (amp)	LRA (amp)	ASHRAE Evap 7.2°C / Cond 54.4°C Liq 46°C / RG 35°C			circuit	over load protector	suggested contactor size (amp)	internal OLR range (amp)	oil qty (cc)	net weight (kg)
				capacity (BTU/h)	power (W)	EER (BTU/Wh)						
AWS5522WGF	39.6	3	17	18340	1850	9.9	3 phase	internal	10	4 - 7	1140	28
AWS5530WGF	50.6	3.8	28	24200	2365	10.3			12	4 - 7	1140	29
AWS5535WGF	59	4.9	32	29200	2900	10.1			12	4 - 7	1140	30

400V 3PH 50/60Hz

R-22 / R-407C - HIGH BACK PRESSURE (HBP)

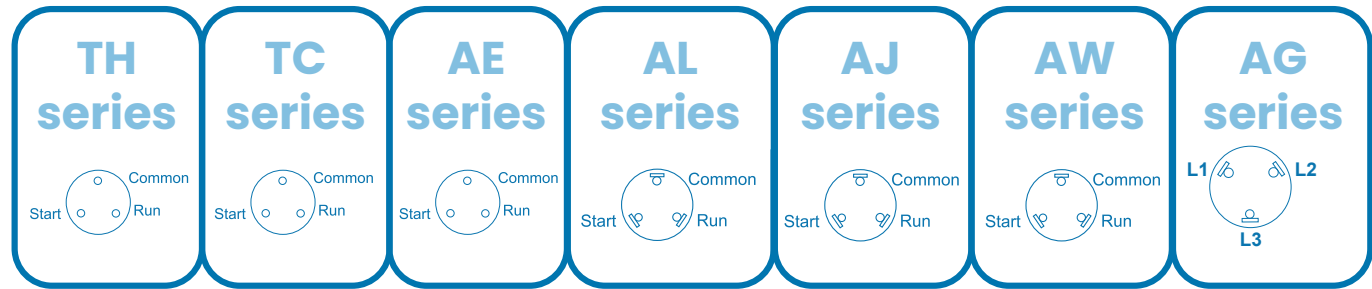
model	disp. (cc)	current (amp)	LRA (amp)	ASHRAE Evap 7.2°C / Cond 54.4°C Liq 46°C / RG 35°C			circuit	over load protector	suggested contactor size (amp)	internal OLR range (amp)	oil qty (cc)	net weight (kg)
				capacity (BTU/h)	power (W)	EER (BTU/Wh)						
AWZ5542WXG	68	6.3	52	35660	3500	10.2	3 phase	internal	16	6 - 10	1140	31
AWZ5542WXG*	68	6.4	52	42800	4196	10.2			16	6 - 10	1140	31

*Performance calculated at 60Hz.

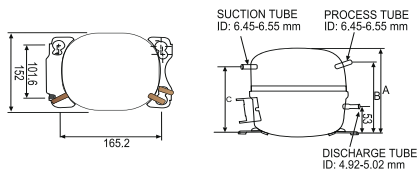
The above performance details are with R-22, Effective Dec 31 2024 Use of R-22 is banned in new equipment and only used in after market service, replacement.
The above compressors are compatible with R-407C charged with POE Oil and ideally suite for High Back Pressure applications with evaporating temperatures above -5°C to +12.8°C.



TECHNICAL DRAWINGS

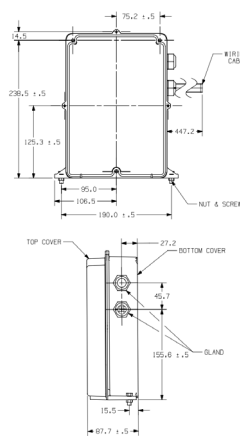


TH Series



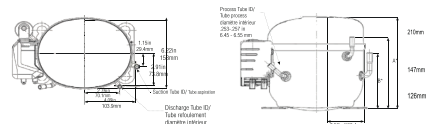
MODEL	DIMENSIONS		
	A	B	C
THK1330YCF, THK1340YCF, THK0384YCG, THK9384YCG	164,7~167,7	139,2~144,2	132,2~137,2
THK1351YJF - THK1365YGS, THK0410YCG, THK9410YCG, THK9412YJE, THK4420YCG	169,2~172,2	143,5~148,5	136,5~141,5
THK9417YJE, THK4430YGS	176,4~179,2	137,7~142,7	137,7~142,7
THK1374YFS, THK2390YJE, THK9414YGS, THK4428YFS	173,6~176,4	147,9~152,9	140,9~145,9

Electrical box

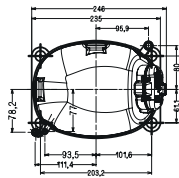


Note: AW plastic electrical box

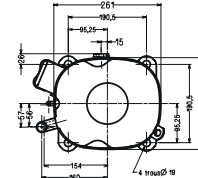
AE Series



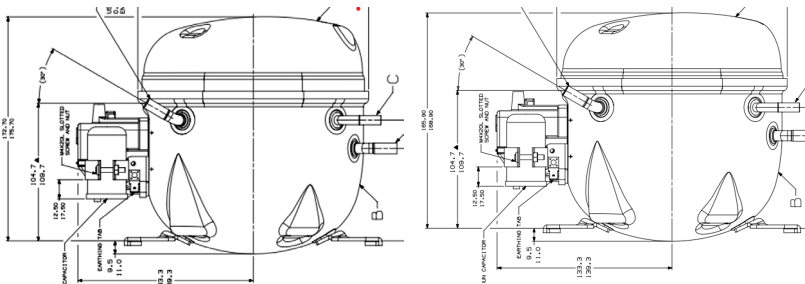
AJ Series



AG Series



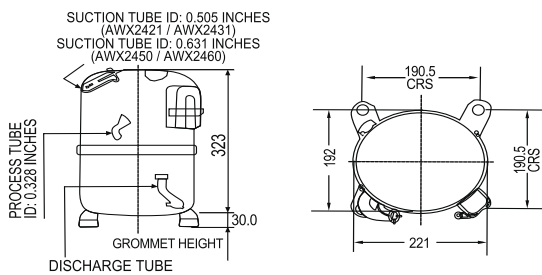
TCW Series



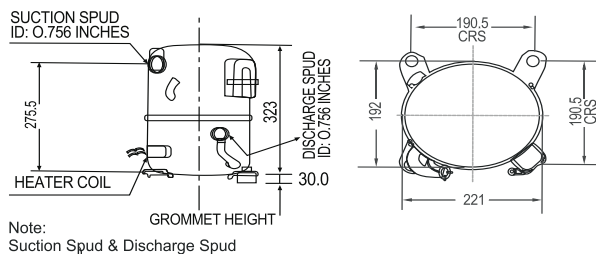
TC415,420,2424,4440

TC330,350,380,390,410,3425,4430

AW Series

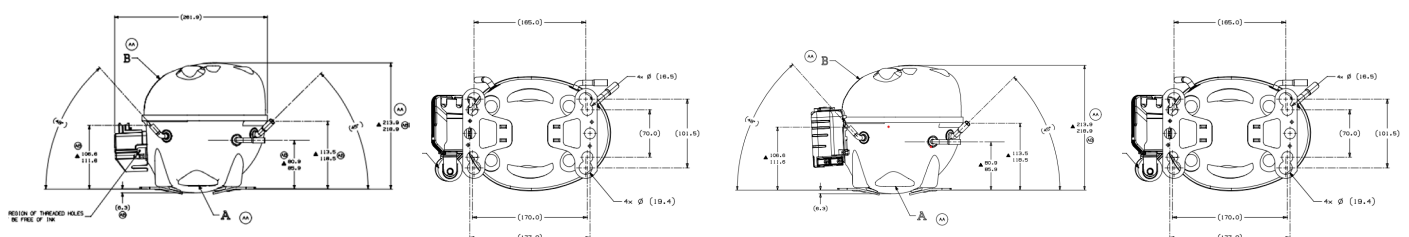


AW SERIES WITH SPUDS FOR CONDENSING UNITS



Note: Suction Spud & Discharge Spud

AL Series

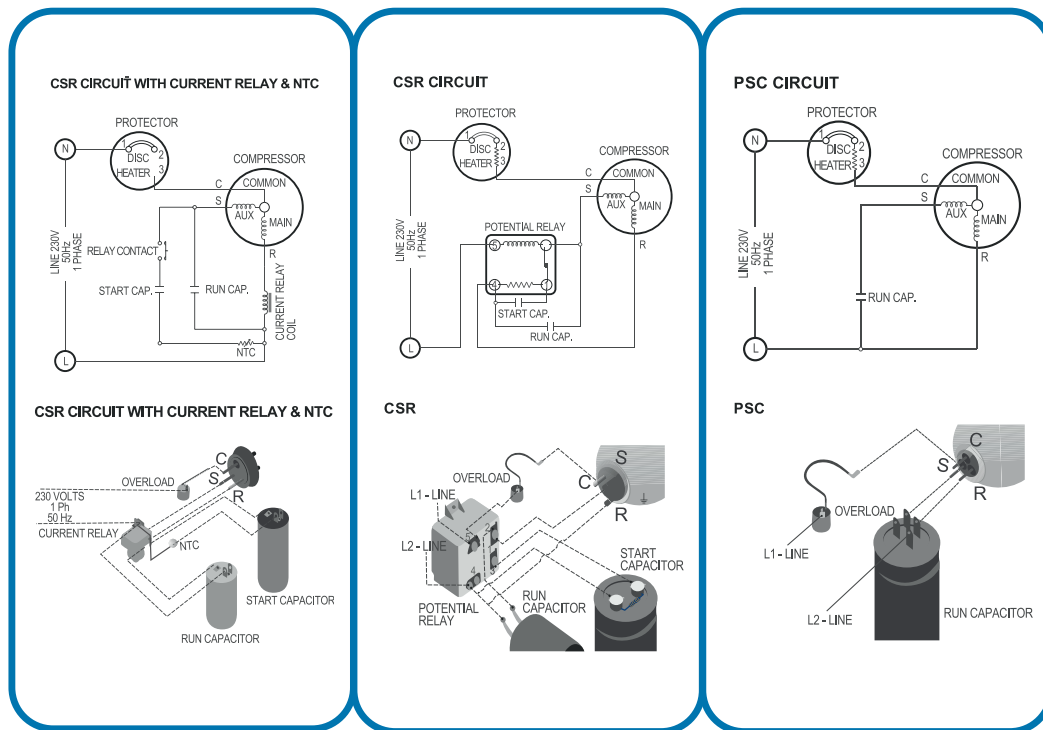
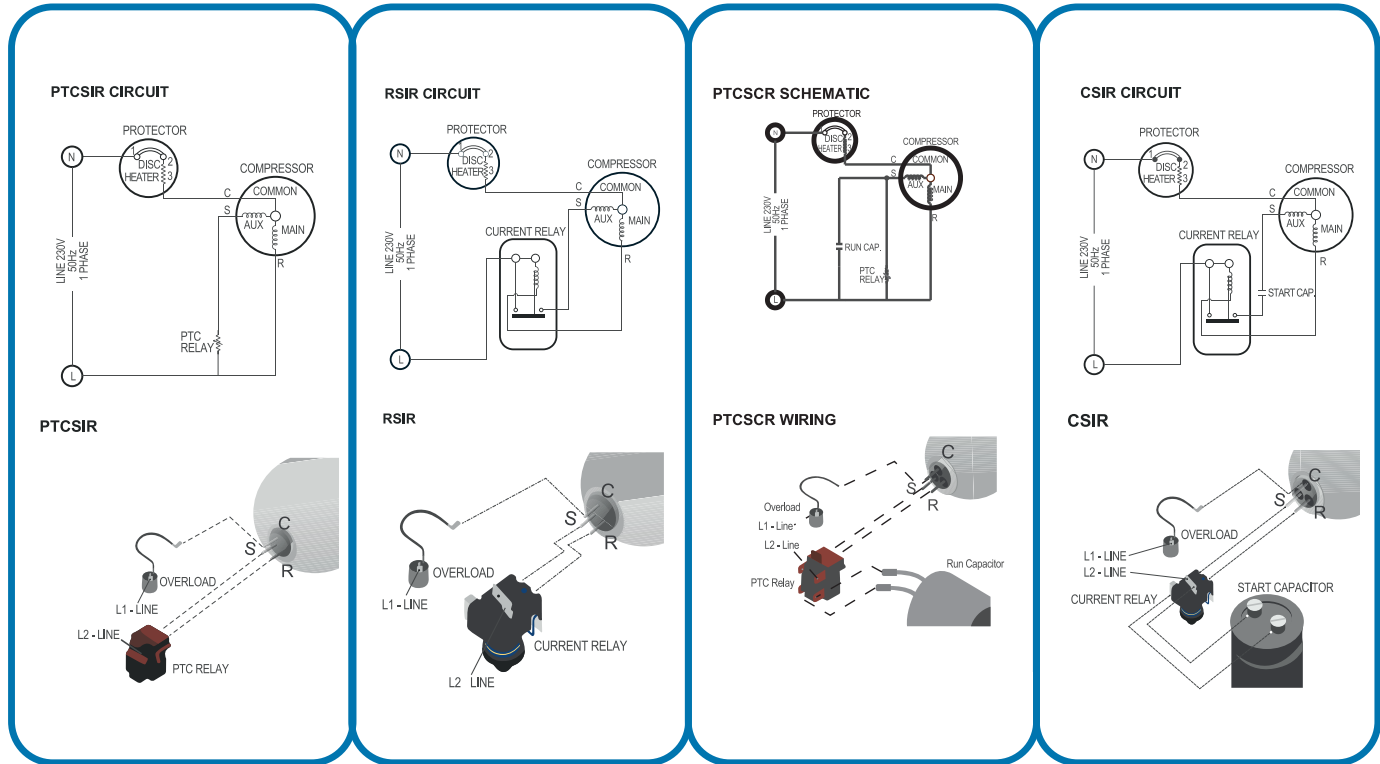


AL446LALX445ZAL4510Z

AL4480Y



WIRING DIAGRAMS



Caution: Safety First
 Note: Never energize the system unless:
 1. The protective cover is securely fastened, and
 2. The compressor is properly connected to ground.

Preliminary data subject to change without notice.

TO FIND OUT MORE INFORMATION

- VISIT TECUMSEH.COM
- CONTACT OUR SALES REPRESENTATIVE

Produced by Tecumseh Products Company | All rights reserved | January 2026

